

Preventing Storm Water Pollution: *What We Can Do* ~Streets and Drainage Maintenance~

GENERAL TOPICS

- **Employees who maintain and repair our streets and drainage infrastructure can help reduce water pollution by following precautions in their daily activities:**

- Pavement Repair
- Paint Striping
- Storm Drain Inlet Cleaning
- Storm Ditch Maintenance

PAVEMENT REPAIR



- Vacuum slurry and cuttings during saw-cutting operations.
- Properly dispose of slurry according to established procedures.

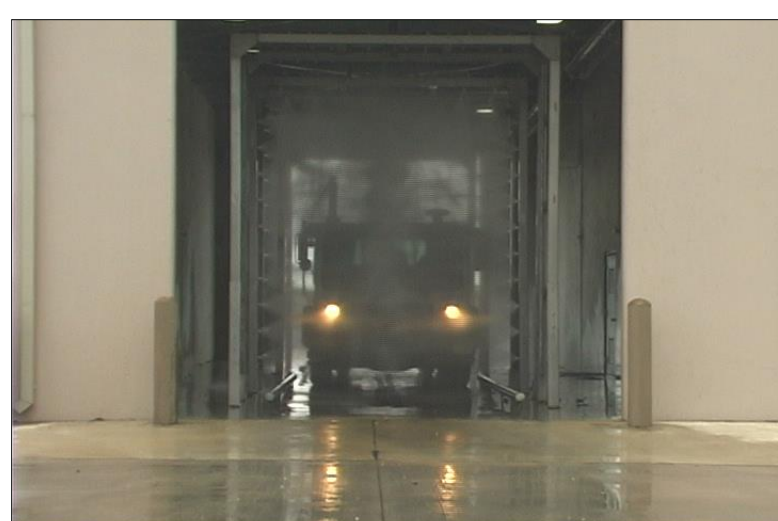


- Require concrete trucks to wash out in designated locations.
- Locate stockpiles of asphalt patching material on a paved surface and cover to prevent contact with rain.

- Mix only necessary amount of material for repairs.
- Sweep up and properly dispose of all unused materials.



- Clean trucks, equipment, and tools in designated wash facilities.

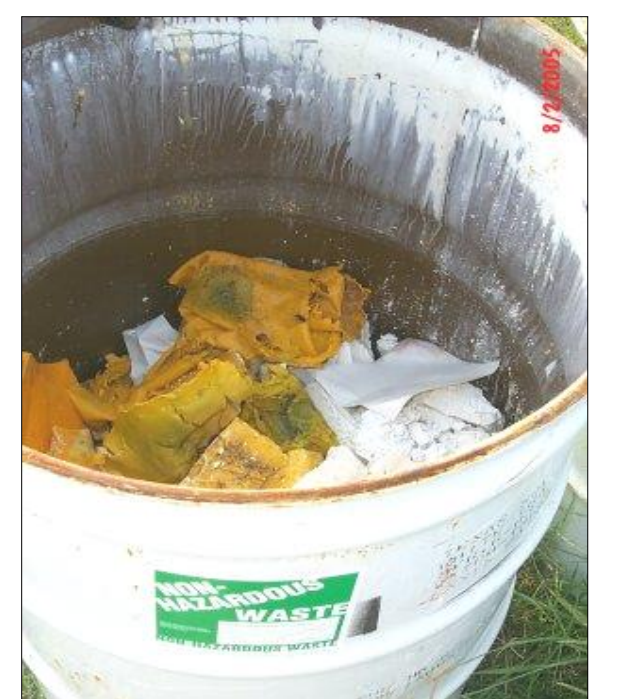


- Use biodegradable products rather than diesel for asphalt patching and cleanup activities.
- When wash facilities are not available, clean equipment over absorbents spread on an impervious surface.
- Promptly sweep up absorbent and dispose according to established procedures.



PAINT STRIPING

- DO NOT apply paint when rain is likely or in high winds.
- Waste handling for water-based (latex) paint:
 - Pour small quantities of unused paint in open barrels and allow to dry. Dispose of dried paint in trash.
 - Contain water used for equipment cleaning and dispose in sanitary sewer.
- Waste handling for oil-based paint:
 - Unused oil-based paint and solvents must be disposed in accordance with established procedures.



Preventing Storm Water Pollution: *What We Can Do* ~Streets and Drainage Maintenance~

STORM DITCH MAINTENANCE



- Sample and analyze materials removed from ditches if it appears to be contaminated with oil or other pollutants.



- Contaminated sediments must be disposed in accordance with established procedures.



- Unpolluted soil may be used onsite as fill or stockpiled for other land application.



- Cover soil stockpiles to prevent erosion and/or install silt fence to capture sediment.



- Prevent erosion by applying grass seed to exposed soils.



- Use turf reinforcement mats to protect channels until vegetation is established.

STORM DRAIN INLET CLEANING

- Properly dispose of trash and debris removed from inlets.



- Report suspected dumping or pollution problems to supervisory personnel.



- Apply “NO DUMPING” markers to inlets where there is evidence of dumping.

REPORT POLLUTION and ILLEGAL DUMPING



- Look for signs of pollution during travel:
 - odor
 - oil sheen on water surface
 - excess trash and debris
 - colored or cloudy water
 - dead or dying fish.

- Report suspected pollution problems to supervisory personnel.



CONCLUSION

*Protecting water quality requires that all employees
do their part to prevent storm water pollution.*